

# MONTHLY MEMBERSHIP PROGRESS REPORT

LOCATION MINNESOTA

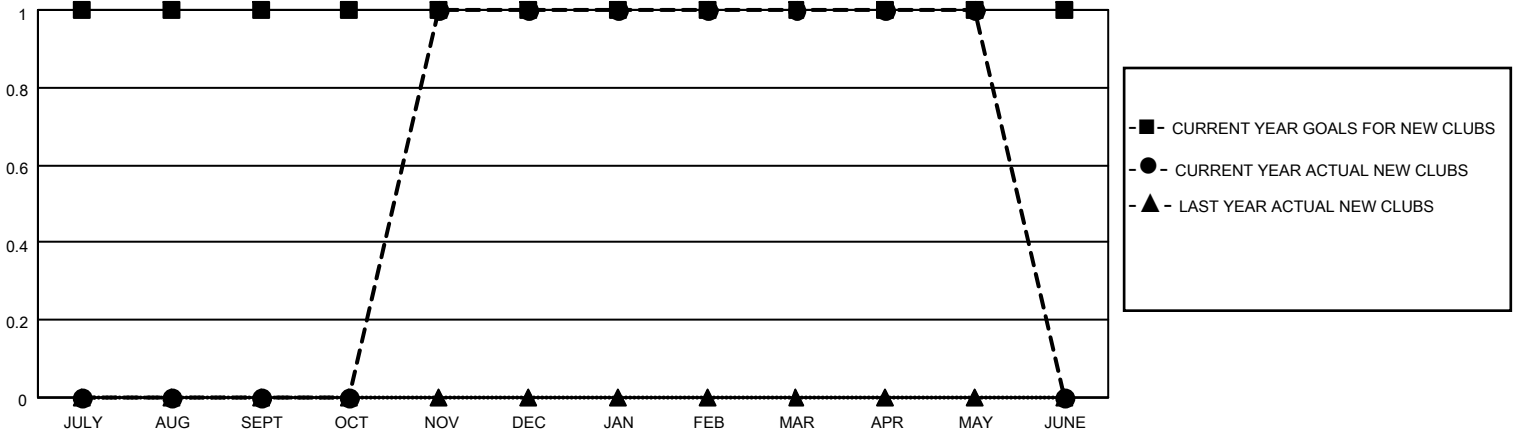
District 5M 2

Results as of: 5/31/2021

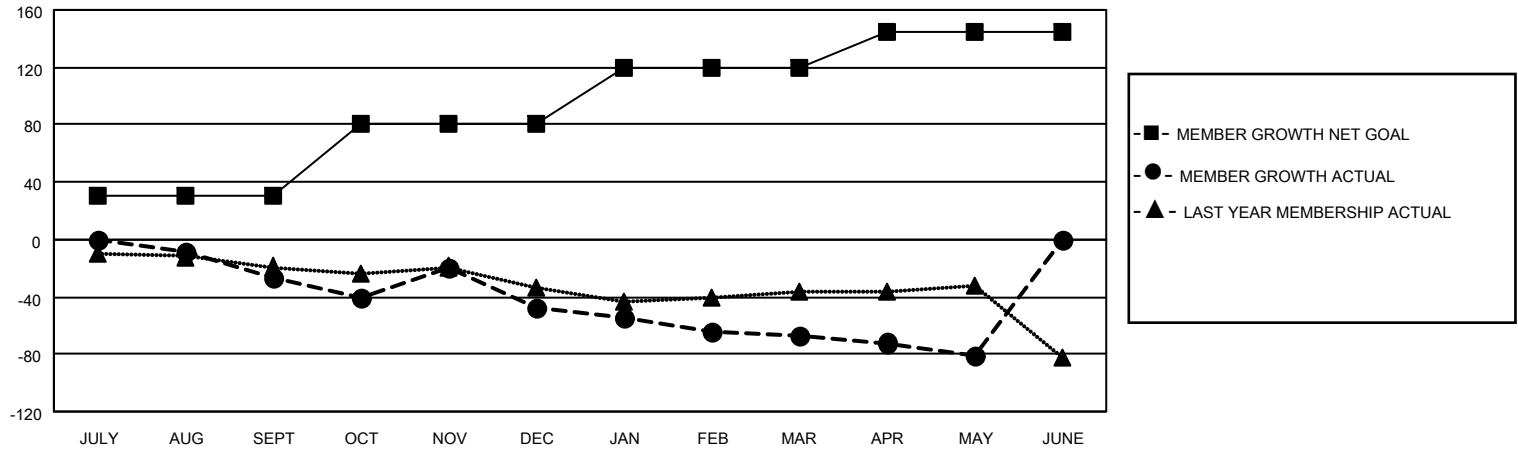
Clubs			
RESULTS FOR 2020-2021			
QUARTER	NEW CLUB GOAL	NEW CLUBS	DROPPED CLUBS
JULY/AUG/SEPT	1	0	0
OCT/NOV/DEC	0	1	0
JAN/FEB/MAR	0	0	0
APR/MAY/JUNE	0	0	0

Members			
RESULTS FOR 2020-2021			
QUARTER	MEMBER GROWTH NET GOAL	MEMBER GROWTH ACTUAL	DROPPED MEMBERS ACTUAL (including transfers)
JULY/AUG/SEPT	30	23	48
OCT/NOV/DEC	50	52	71
JAN/FEB/MAR	40	21	40
APR/MAY/JUNE	25	28	41

**GOALS AND ACTUAL NEW CLUBS CUMULATIVE**



**GOALS AND ACTUAL MEMBERS CUMULATIVE**



**DROPPED CLUBS: 0**

**36 CLUBS OF 66 ADDED 1 OR MORE NEW MEMBERS**

<u>GENDER DISTRIBUTION</u>	
MALE	1,524 (68.49%)
FEMALE	701 (31.51%)

<u>DROPPED MEMBERS</u>	
DECEASED	33
CLUB CANCELLED	0
OTHER	167
<b>TOTAL</b>	<b>200</b>

[CLICK HERE FOR CUMULATIVE MEMBERSHIP DATA](#)

TOTAL FAMILY UNIT MEMBERS	375
FAMILY MEMBERS PAYING HALF DUES	191